

Instruction SimSync iRacing

1. DESCRIPTION

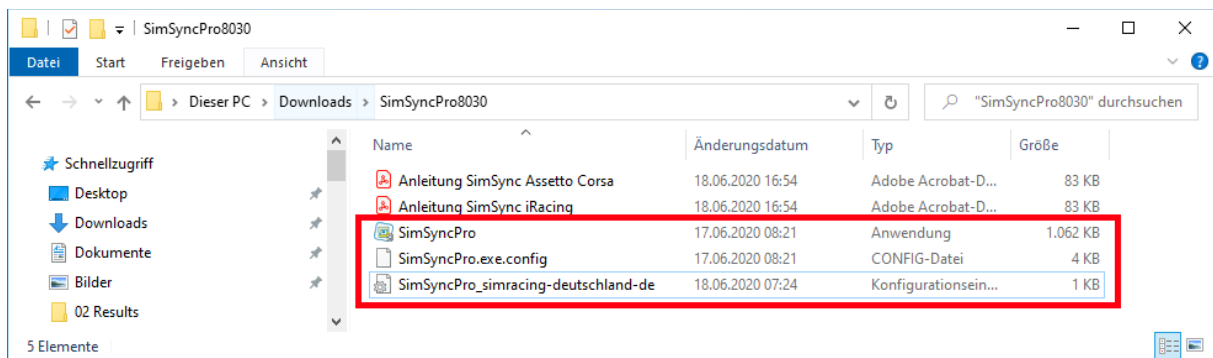
The SimSync PRO (short Sync) is a software that synchronizes a local game installation with the installation of the game server. Only the data that is missing or different in the local installation is downloaded from the server.

2. SYSTEM REQUIREMENTS

The sync is executable on all computers on which .NET Framework 3.5 and newer is installed.

3. INSTALLATION

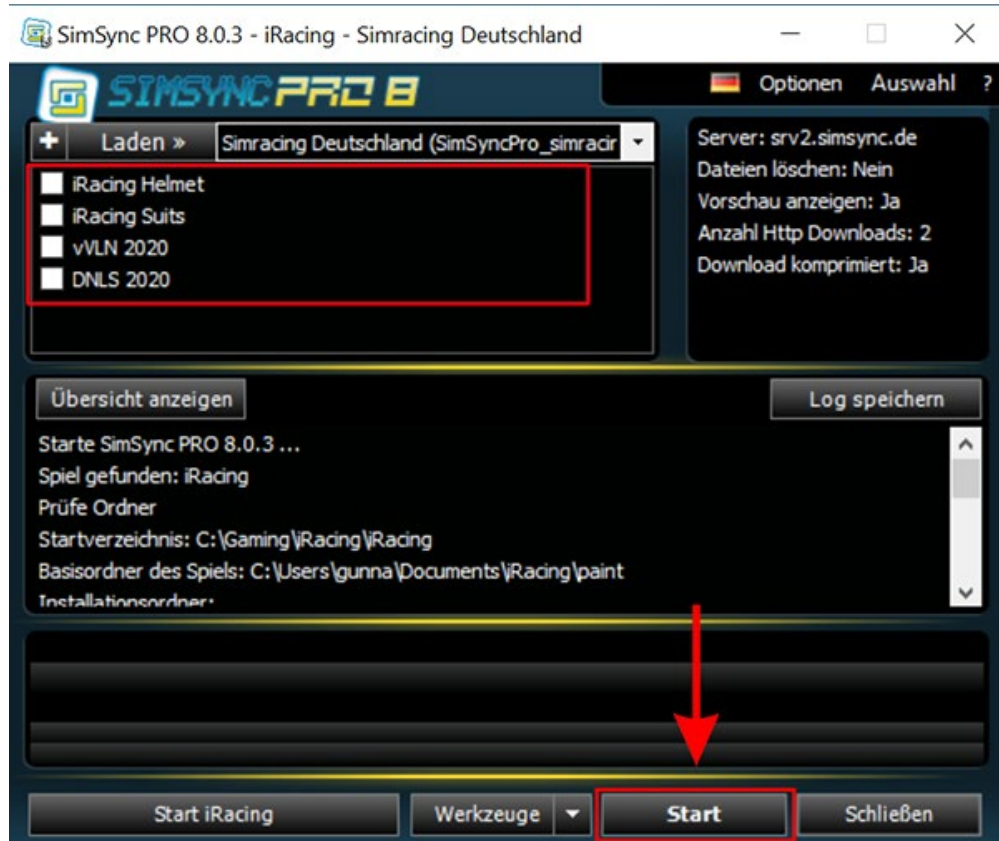
- The following 3 elements must be copied.



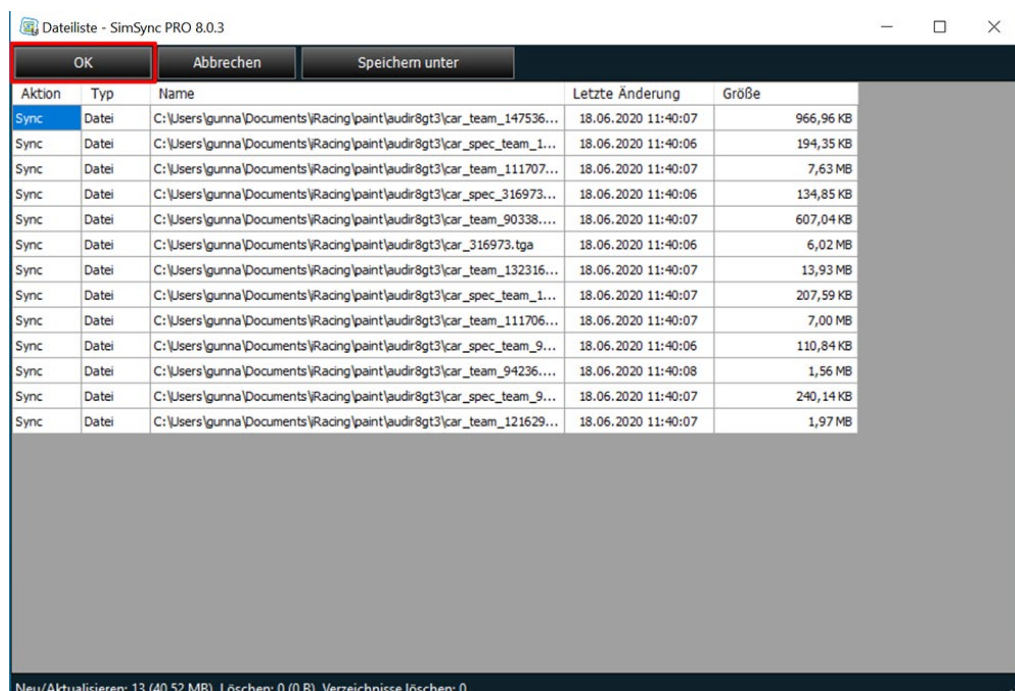
- The 3 elements must be copied into the main folder "iRacing", which is normally located under this path.
- C:\Program Files (x86)\iRacing

4. APPLICATION

- Start the program by double-clicking on SimSyncPro.exe The program will then check if it is in the base directory of iRacing and an error message will appear if not. At the first start also a small overview of the commands is shown, which can be displayed later by pressing the [?] button.
- Now select the areas to be synchronized.
- Click [Start] to start the synchronization. First, the sync determines which files need to be synchronized and then calculates the approximate duration for this process.



- First, the sync determines which files need to be synchronized and then calculates the approximate duration for this process.
- Click on "ok" and the program starts downloading the new data.



- When the synchronization process is complete, you will receive an appropriate message.